

ASSEMBLY INSTRUCTIONS FOR PL-ICKIT

UNPACKING

Open package containing PL-ICKIT. You should have the following components:

ITEM	PART NO.	DESCRIPTION	QTY
1	0046-B502-08	Stainless Steel Connecting Link	2
2	6013-0058	Stainless Steel 5/16-18 Elastic Stop Nut	3
3	6021-1234	Stainless Steel Socket-Head Shoulder Bolt	3
4	0046-B504-08	Stainless Steel Spacer	2
5	6021-1547	SS Socket-Head Shoulder Scw .375-16 x .625	1
6	6013-0020	Stainless Steel .375-16 Elastic Stop Nut	1
7	2929-B251-08	Adapter	1

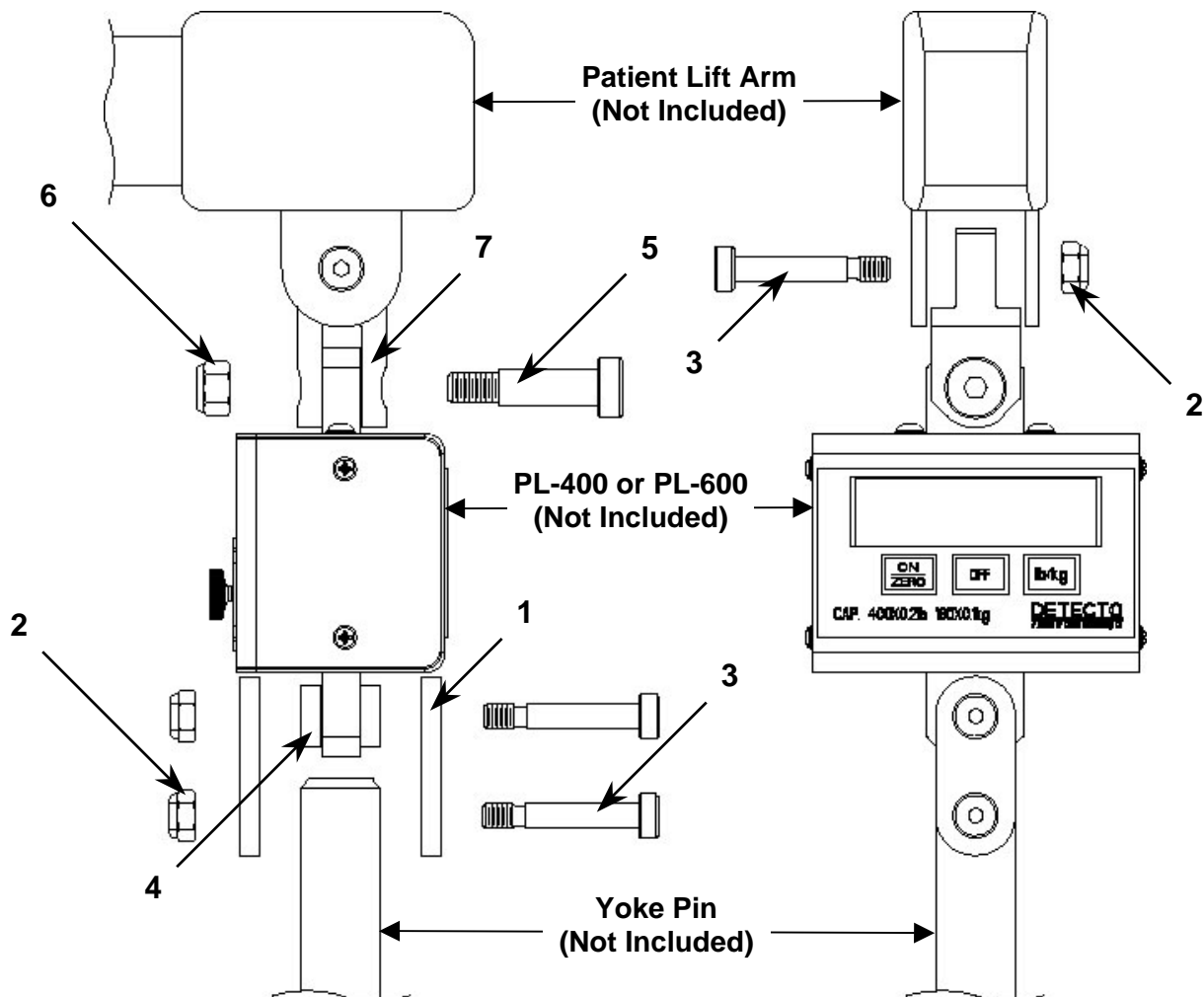
TOOLS REQUIRED

3/16 Allen wrench 1/2" open end, box end, or combination wrench
 1/4 Allen wrench 9/16" open end, box end, or combination wrench

ASSEMBLY

Referring to the figure below:

1. Attach the Connecting Links (1) to the PLXXX scale (Load Cell) using one of the Socket-Head Shoulder Bolt (2), 2 Spacers (4) (1 on each side of the Load Cell) and 5/16-18 Elastic Nut (3). Securely tighten using the 3/16 Allen wrench and 1/2 wrench.
2. Place the Yoke Pin into the Connecting Links (1) and then secure the Yoke Pin to the Connecting Links (1) with a Socket-Head Shoulder Bolt (2) and 5/16-18 Elastic Nut (3). Securely tighten using the 3/16 Allen wrench and 1/2 wrench.
3. Attach the Adapter (7) to the PLXXX scale using the .375-16 x .625 Socket-Head Shoulder screw and .375-16 Elastic Nut (6). Securely tighten using the 1/4 Allen wrench and 9/16 wrench.
4. Attach the entire assembly to the patient lift arm using the remaining Socket-Head Shoulder Bolt (2) and 5/16-18 Elastic Nut (3). Securely tighten using the 3/16 Allen wrench and 1/2 wrench.



DO NOT OVER TIGHTEN MOUNTING HARDWARE.
 This will damage mounting brackets. Brackets must pivot. The bolt threads must protrude past the elastic stop nut to ensure that locking feature functions.

0046-M509-O1 Rev A
 10/04

ASSEMBLY INSTRUCTIONS FOR PL-ICKIT

UNPACKING

Open package containing PL-ICKIT. You should have the following components:

ITEM	PART NO.	DESCRIPTION	QTY
1	0046-B502-08	Stainless Steel Connecting Link	2
2	6013-0058	Stainless Steel 5/16-18 Elastic Stop Nut	3
3	6021-1234	Stainless Steel Socket-Head Shoulder Bolt	3
4	0046-B504-08	Stainless Steel Spacer	2
5	6021-1547	SS Socket-Head Shoulder Scw .375-16 x .625	1
6	6013-0020	Stainless Steel .375-16 Elastic Stop Nut	1
7	2929-B251-08	Adapter	1

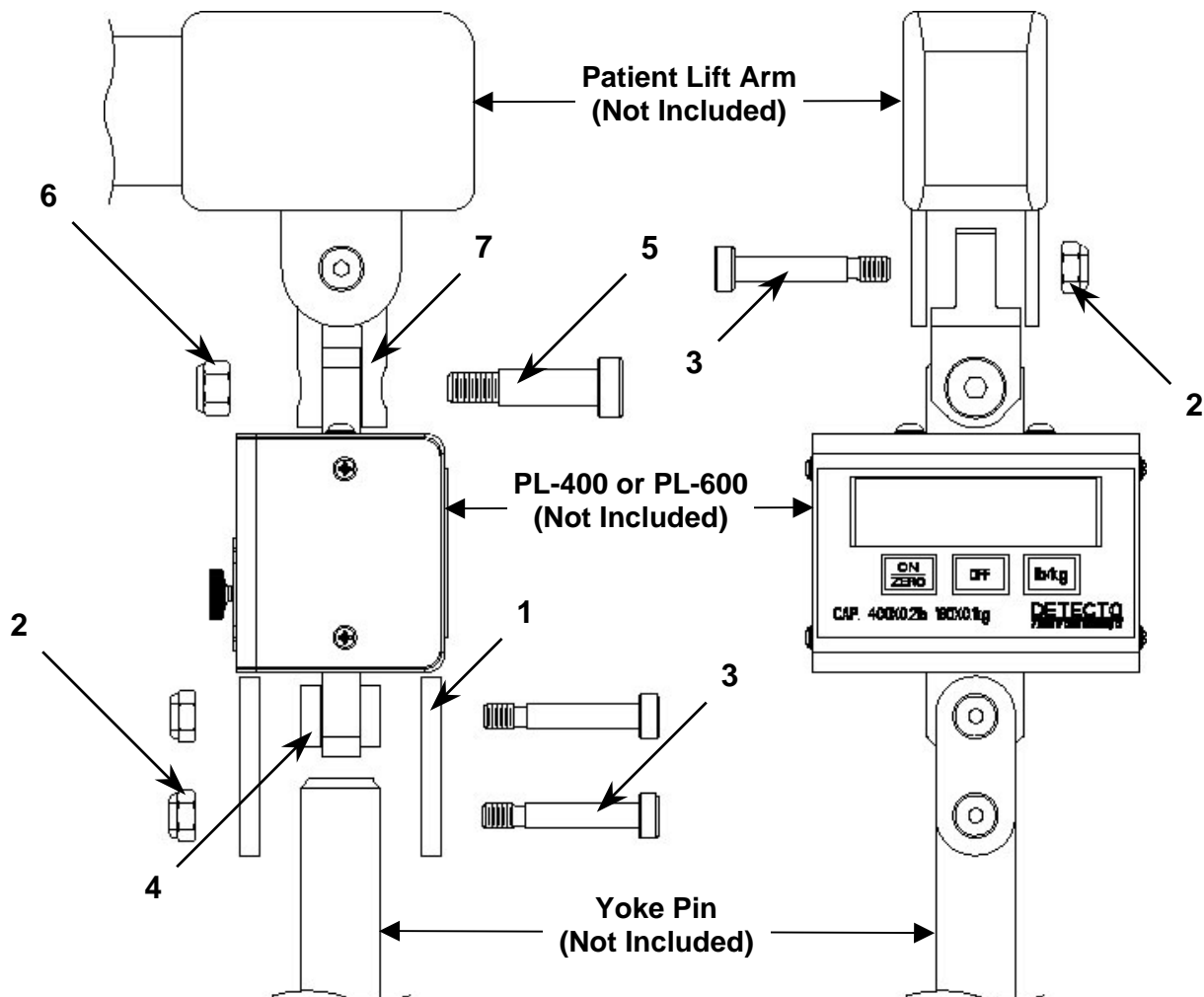
TOOLS REQUIRED

3/16 Allen wrench 1/2" open end, box end, or combination wrench
 1/4 Allen wrench 9/16" open end, box end, or combination wrench

ASSEMBLY

Referring to the figure below:

1. Attach the Connecting Links (1) to the PLXXX scale (Load Cell) using one of the Socket-Head Shoulder Bolt (2), 2 Spacers (4) (1 on each side of the Load Cell) and 5/16-18 Elastic Nut (3). Securely tighten using the 3/16 Allen wrench and 1/2 wrench.
2. Place the Yoke Pin into the Connecting Links (1) and then secure the Yoke Pin to the Connecting Links (1) with a Socket-Head Shoulder Bolt (2) and 5/16-18 Elastic Nut (3). Securely tighten using the 3/16 Allen wrench and 1/2 wrench.
3. Attach the Adapter (7) to the PLXXX scale using the .375-16 x .625 Socket-Head Shoulder screw and .375-16 Elastic Nut (6). Securely tighten using the 1/4 Allen wrench and 9/16 wrench.
4. Attach the entire assembly to the patient lift arm using the remaining Socket-Head Shoulder Bolt (2) and 5/16-18 Elastic Nut (3). Securely tighten using the 3/16 Allen wrench and 1/2 wrench.



DO NOT OVER TIGHTEN MOUNTING HARDWARE.
 This will damage mounting brackets. Brackets must pivot. The bolt threads must protrude past the elastic stop nut to ensure that locking feature functions.

0046-M509-O1 Rev A
 10/04